

Tech Tip

April 2020



Outdoor Product Motor Rewire: MOT18698

We have been seeing this motor when attached to a PWM signal not operating. Reports are that the motor has high voltage as well as 6 to 16 VDC on the low voltage and the motor still doesn't run.

We will ask you to put 24 VAC to the low voltage wires and see if the motor operates. This appears to only effect models 2TTZ/2TWZ with the ninth digit being an A or B.

Follow the instructions provided on the next page for the necessary rework.



Field Service Representative Contact

SW FL 239-277-0344; Option 3

SE FL 954-421-7133; Option 5

N FL 844-358-7263; option 2

Tech Tip

April 2020



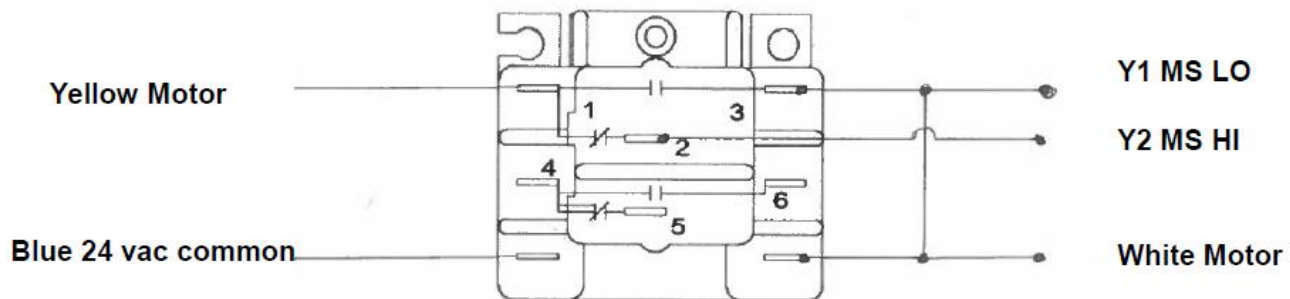
Outdoor Product Motor Rewire: MOT18698

To set the MOT18698 as a two speed motor on the two compressor units you can.

1. Place jumpers on Y and Y2 off of the MS Lo and MS Hi contactors
2. Cut the wire on MOT18698 so you can make these jumpers on to RLY00886

This would work as a permanent fix on ac units but obviously with heat pumps you will have to return once we get a motor that works with PWM so defrost works correctly.

For further information contact your local FSR.



RLY00886

Field Service Representative Contact

SW FL 239-277-0344; Option 3

SE FL 954-421-7133; Option 5

N FL 844-358-7263; option 2